



DRIVER INSTALLATION GUIDE for Microsoft® Windows® 7 PC

Please read this installation guide before installing the USB driver, supplied with the OPC-478UC/966U/1122U/1862, onto a Microsoft® Windows® 7 PC.

NOTE: The USB driver can be used with both 32 bit and 64 bit versions of Microsoft® Windows® 7.

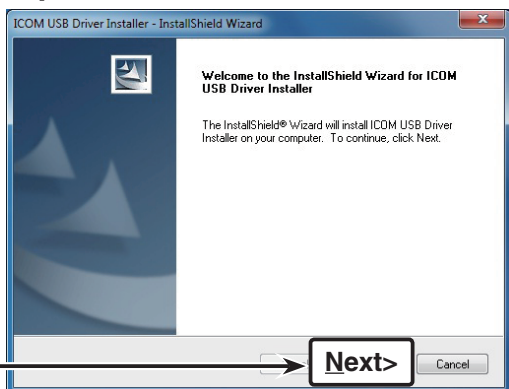
NOTE:

- After the USB driver installation has been completed (Step 1), connect the cloning cable to the PC (Step 2).
- The displayed dialog boxes, indications or operations may differ slightly from the following instructions, depending on your system settings and its service pack level.

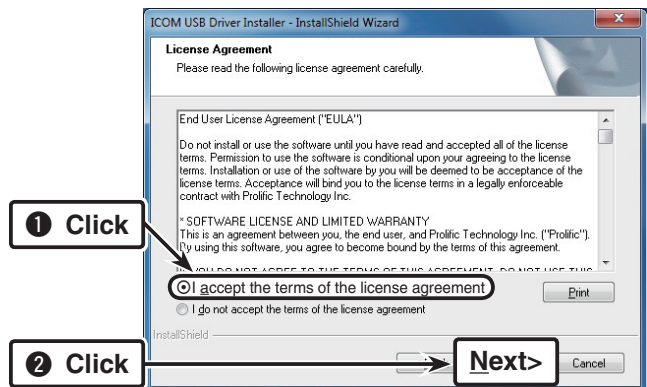
1 USB driver installation (Step 1)

When installing the USB driver, Log On as the **administrator**.

- ① Make sure Windows has completed its start-up, and no other applications are running.
- ② Insert the supplied CD into the CD drive.
- ③ Double click "ICOM USB DriverInstaller.exe" contained in the 'Win7' folder in the CD window.
 - When "User Account Control" appears, click [Yes] to continue.
- ④ "Welcome to the InstallShield Wizard for ICOM USB Driver Installer" appears.
Click [Next >].

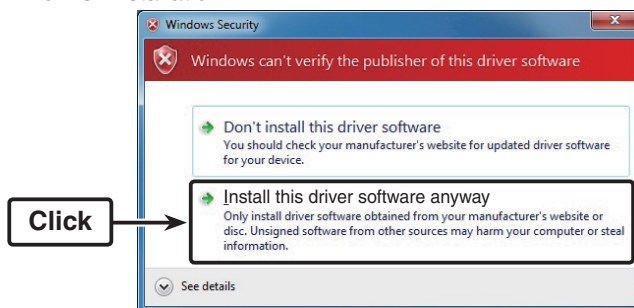


- ⑤ "License Agreement" appears.
Read all of the license agreement, and then select "I accept the terms of the license agreement," if you agree.
Click [Next >].

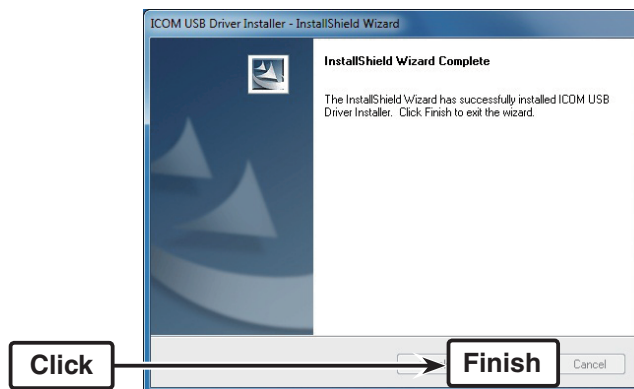


- ⑥ "Windows Security" appears.

Click "Install this driver software anyway" to start the USB driver installation.



- ⑦ After the installation has completed, "InstallShield Wizard Complete" appears.
Click [Finish].

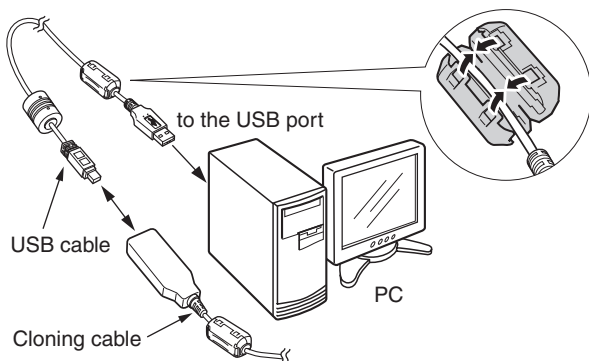


Icom, Icom Inc. and the Icom logo are registered trademarks of Icom Incorporated (Japan) in Japan, the United States, the United Kingdom, Germany, France, Spain, Russia and/or other countries. Adobe and Reader are registered trademarks of Adobe Systems Incorporated in the United States and/or other countries. Microsoft, Windows and Windows Vista are registered trademarks of Microsoft Corporation in the United States and/or other countries. All other products or brands are registered trademarks or trademarks of their respective holders.

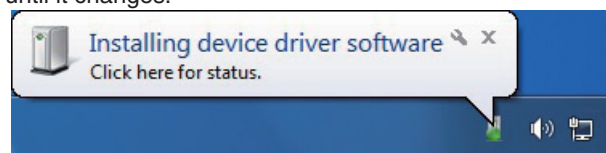
2 Cable connection (Step 2)

After completing Step 1, when the cloning cable is connected to the PC, the PC automatically starts the installation.

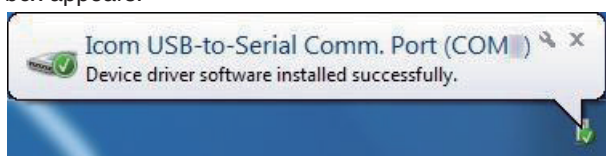
- 1 Connect the cloning cable to the USB cable, and then the USB cable to the PC's USB port, as illustrated below.
 - Attach the ferrite bead to the PC side of the USB cable.



- 2 This dialog box appears on the desktop. Wait a moment until it changes.



- 3 The USB driver installation is complete when this dialog box appears.

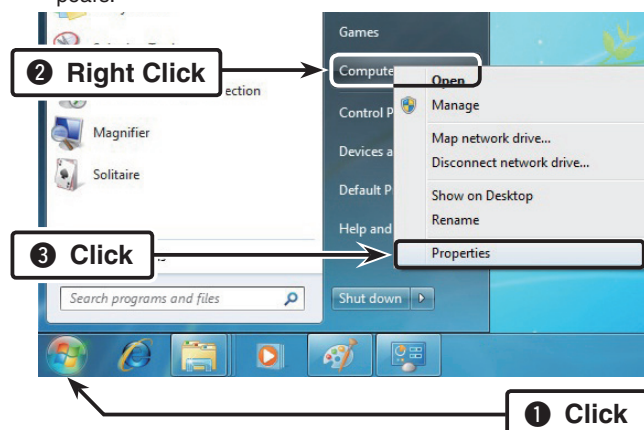


3 COM Port Confirmation (Step 3)

After the driver installation has completed, confirm the driver availability and the port number.

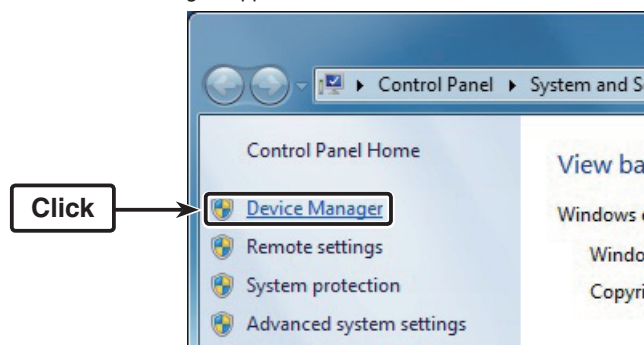
The COM port number is used to set communication with the cloning software.

- 1 Click the Windows "START" icon.
- 2 Right click [Computer] in the <Start> menu, and then click [Properties], as shown below.
 - (Control Panel ► System and Maintenance ►) "System" appears.

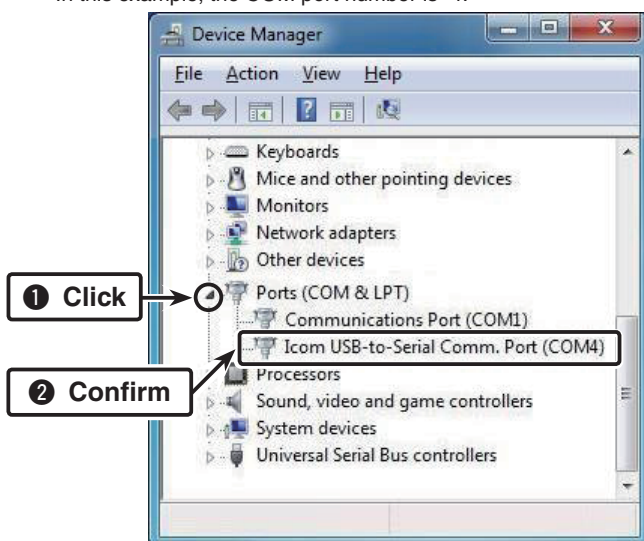


3 COM Port Confirmation (Step 3)–Continued

- 3 Click [Device Manager].
 - "Device Manager" appears.



- 4 Click the ">" next to "Ports (COM&LPT)." Confirm "Icom USB-to-Serial Comm. Port (COM*)" is displayed.
 - In this example, the COM port number is "4."



- If the COM port number is not displayed, or several numbers are displayed at the same time like "Icom USB-to-Serial Comm. Port (COM*)(COM*)", the driver may not be installed properly. In such case, uninstall the USB driver and install it again.
- You can uninstall the program using the "Uninstall a program" in the Windows Control Panel.

Using the Recovery file:

If this "!" mark is displayed in front of the "Icom USB-to-Serial Comm. Port (COM*)" or "USB-Serial Controller," and following message appears in the Device status when you open its Properties;

This device is not configured correctly. (code 1)
This name is already in use as either a service name or a service display name.

you must use the recovery file and reinstall the USB driver, by following these steps.

- 1 Uninstall the USB driver using the "Uninstall a program" in the Windows Control Panel.
- 2 Insert the supplied CD into the CD drive.
- 3 Double click "Recover_Setup_Driver(Win7).reg" contained in the 'Win7' folder in the CD window.
 - When "User Account Control" appears, click [Yes] to continue.
- 4 When the next window appears, click [Yes].
- 5 When the next window appears, click [OK].
- 6 After restarting the PC, install the USB driver as "1 USB driver installation (Step 1)" in this installation guide.